

DEPARTMENT OF THE ARMY TECHNICAL MANUAL

**DIRECT SUPPORT AND GENERAL SUPPORT MAINTENANCE
REPAIR PARTS AND SPECIAL TOOLS LISTS (INCLUDING
DEPOT MAINTENANCE REPAIR PARTS AND SPECIAL TOOLS)
AMPLIFIER, AUDIO FREQUENCY AM-465/FR
FSN 5830-503-3362**

**Headquarters, Department of the Army, Washington, D.C.
19 April 1974**

Current as of October 1973

	Paragraph	Page
SECTION I. INTRODUCTION		
Scope	1-1	2
General	1-2	2
Explanation of columns	1-3	2
Special information	1-4	4
Location of repair parts	1-5	4
Abbreviations (Not applicable)	1-6	4
Reporting of equipment publication improvements	1-7	4
II. REPAIR PARTS LIST		6
III. SPECIAL TOOLS, TEST AND SUPPORT EQUIPMENT (Not applicable)		
IV. INDEX -- FEDERAL STOCK NUMBER AND REFERENCE NUMBER CROSS- REFERENCE TO FIGURE AND ITEM NUMBER		10

***This manual supersedes TM 11-5820-215-35P, 10 June 1968, including all changes.**

SECTION I
INTRODUCTION

1-1. Scope

This manual lists repair parts and special tools required for the performance of direct support, general support, and depot maintenance of the AM-465/FR. The PCCN for the AM-465/FR is GCRAEV for all models.

1-2. General

This repair parts and special tools list is divided into the following sections:

a. Repair Parts List - Section II. A list of repair parts authorized for the performance of maintenance at the direct support, general support, and depot level. This repair parts list is arranged in alphabetical order.

b. Special Tools, Test and Support Equipment - Section III. Not applicable.

c. Index - Federal Stock Number and Reference Number Cross-Reference to Figure and Item Number - Section IV. A list, in ascending numerical sequence, of all Federal stock numbers appearing in the listings, followed by a list, in alphameric sequence, of all reference numbers appearing in the listings. Federal stock number and reference numbers are cross-referenced to each illustration figure and item number or reference designation appearance.

1-3. Explanation of Columns

The following provides an explanation of columns found in the tabular list.

a. Source, Maintenance, and Recoverability Codes (SMR).

(1) *Source code.* Indicates the manner of acquiring support items for maintenance, repair, or overhaul of end items. Source codes are —

<i>Code</i>	<i>Explanation</i>
PA —	Item procured and stocked for anticipated or known usage.
P B -	Item procured and stocked for insurance purposes because essentiality dictates that a minimum quantity be available in the supply systems.
P C -	Item procured and stocked and which otherwise would be coded PA except that it is deteriorative in nature
P D -	Support item, excluding support equipment, procured for initial issue or outfitting and

<i>Code</i>	<i>Explanation</i>
	stocked only for subsequent or additional initial issues or outfittings. Not subject to automatic replenishment.
PE —	Support equipment procured and stocked for initial issue or outfitting to specified maintenance repair activities.
PF —	Support equipment which will not be stocked but which will be centrally procured on demand.
PG —	Item procured and stocked to provide for sustained support for the life of the equipment. It is applied to an item peculiar to the equipment which because of probable discontinuance or shutdown of production facilities would prove uneconomical to reproduce at a later time.
K D -	An item of depot overhaul/repair kit and not purchased separately. Depot kit defined as a kit that provides items required at the time of overhaul or repair.
K F -	An item of a maintenance kit and not purchased separately. Maintenance kit defined as a kit that provides an item that can be replaced at organizational or direct support or general support levels of maintenance.
K B -	item included in both a depot overhaul/&r kit and a maintenance kit.
MO--	Item to be manufactured or fabricated at organizational level,
M F -	Item to be manufactured or fabricated at direct support maintenance level
M H -	Item to be manufactured or fabricated at general support maintenance level.
M D -	Item to be manufactured or fabricated at depot maintenance level.
A O -	Item to be assembled at organizational level.
A F -	Item to be assembled at direct support maintenance level,
A H -	Item to be assembled at general support maintenance level
A D -	Item to be assembled at depot maintenance level.
X A -	Item is not procured or stocked because the requirements for the item will result in the replacement of the next higher assembly.
X B -	Item is not procured or stocked. If not available through salvage, requisition.

<i>Code</i>	<i>Explanation</i>
XC	Installation drawing, diagram instruction sheet, field service drawing, that is identified by manufacturers' part number.
XD	Support items can be requisitioned with justification.

NOTE

Cannibalization or salvage may be used as a source of supply for any items source coded above except those coded XA and aircraft support items as restricted by AR 700-42.

(2) *Maintenance code.* Maintenance codes are assigned to indicate the levels of maintenance authorized to USE and REPAIR support items. The maintenance codes are entered in the third and fourth positions of the Uniform SMR Code Format as follows —

(a) *Use (third position).* The maintenance code entered in the third position indicates the lowest maintenance level authorized to remove, replace, and use the support item. The maintenance code entered in the fourth position indicates one of the following levels of maintenance.

<i>Code</i>	<i>Application/Explanation</i>
O	Support item is removed, replaced used at the organizational level of maintenance.

NOTE

A code "C" may be used in this position to denote crew or operator maintenance performed within or organizational maintenance.

F	Support item is removed, replaced, used at the direct support maintenance level.
H	Support item is removed, replaced, used at the general support maintenance.
D	Support items that are removed, replaced, used at depot only.

(b) *Repair (fourth position).* The maintenance code entered in the fourth position indicates whether the item is to be repaired and identifies the lowest maintenance level with the capability to perform complete repair (ii all authorized maintenance functions) & When a maintenance code is not used a dash (-) sign is entered. For multi-service equipment/systems or when a code is entered, this position will contain one of the following maintenance codes as assigned by the service(s) that require the code-

<i>Code</i>	<i>Application/Explanation</i>
O	The lowest maintenance level capable of complete repair of the support item is the organizational level.
F	The lowest maintenance level capable of

<i>Code</i>	<i>Application/Explanation</i>
	complete repair of the support item is direct support.
H	The lowest maintenance level capable of complete repair of the support item is general support.
D	The lowest maintenance level capable of complete repair of the support item is the depot level.
L	Repair restricted to designated Specialized Repair Activity.
Z	Non-repairable. No repair is authorized.
B	No repair is authorized. The item may be reconditioned by adjusting, lubricating, etc., at the user level. No parts or special tools are procured for the maintenance of this item.

(3) *Recoverability code.* Recoverability codes are assigned to support items to indicate the disposition action on unserviceable items. The recoverability code is entered in the sixth position of the uniform SMR Code Format as follows —

<i>Code</i>	<i>Explanation</i>
Z	Nonrepairable item. When unserviceable, condemn and dispose at the level indicated in the first digit of the maintenance code
O	Repairable item. When uneconomically repairable, condemn and dispose at organizational level
F	Repairable item. When uneconomically repairable, condemn and dispose at the direct support level.
H	Repairable item. When uneconomically repairable, condemn and dispose at the general support level.
D	Repairable item. When beyond lower level repair capability, return to depot. Condemnation and disposal not authorized below depot level.
L	Repairable item. Repair, condemnation, and disposal not authorized below depot/Specialized Repair Activity level.
A	Item requires special handling or condemnation procedures because of specific reasons (i.e., precious metal content, high dollar value, critical material or hazardous material).

b. *Federal Stock Number.* Indicates the Federal stock number assigned to the item and will be used for requisitioning purposes.

c. *Description.* Indicates the Federal item name and a minimum description required to identify the item. The last line indicates the reference number

followed by the applicable Federal Supply Code for Manufacturer (FSCM) in parentheses. The FSCM is used as an element in item identification to designate manufacturer or distributor or Government agency, etc., and is identified in SB 708-42.

d. Unit of Measure (U/M). Indicates the standard or basic quantity by which the listed item is used in performing the actual maintenance function. This measure is expressed by a two-character alphabetical abbreviation; e.g., ea, in, pr, etc., and is the basis used to indicate quantities and allowances in subsequent columns. When the unit of measure differs from the unit of issue, the lowest unit of issue that will satisfy the required units of measure will be requisitioned.

e. Quantity Incorporated in Unit. This column indicates the quantity of the item used in the equipment. Subsequent appearances of the same item in the same assembly are indicated by the letters "REF".

f. 30-Day DS/GS Maintenance Allowances.

NOTE

Allowances in GS column are for GS maintenance only.

(1) The repair parts indicated by asterisk entries in separate allowance columns for DS and GS represent those authorized for use at that category of maintenance to be requisitioned on an "as required" basis, until stockage is based on demand in accordance with AR 710-2.

(2) Allowance quantities are indicated in the special tool lists section for special tools, TMDE, and other support equipment.

g. 1-Year Allowances Per 100 Equipments/Contingency Planning Purposes. Column intentionally left blank.

h. Depot Maintenance Allowance Per 100 Equipments. This column indicates opposite the first appearance of each item the total quantity authorized for depot maintenance of 100 equipments.

i. Illustration. This column is divided as follows:

(1) *Figure number.* Indicates the figure number of the illustration on which the item is shown in TM 11-5101.

(2) *Item number.* Indicates the item number or reference designation used to reference the item in the illustration.

1-4. Special Information

a Usable on codes are included in column 3. Uncoded items are applicable to all models Identification of the usable on codes used in this publication are -

Code	Used on
A4H	AM-465/FR

(Next printed page is 6.)

b. The following publications pertain to AM-465/FR and its components:

TM 11-5101 AF Amplifier AM-465/FR.

TM 11-5830-215-20P Organizational Maintenance Repair Parts and Special Tools Lists: Amplifier, Audio Frequency AM-465

1-5. Location of Repair Parts

a. This manual contains one cross-reference index (sec IV) to be used to locate a repair part when either the Federal stock number or reference number (manufacturer's part number) is known. The figure number in the index is prepared in numerical alphanumeric sequence in ascending order. The reference numbers (manufacturer's part number) are listed immediately following the last list Federal stock number in the index of Federal stock numbers.

b. When the Federal stock number or reference number is known, follow the procedures given in (1) and (2) below.

(1) Refer to the index of Federal stock numbers (sec IV) and locate the Federal stock number or reference number. The FSN and reference number are cross-referenced to the applicable figure and item number or reference designation.

(2) Refer to the repair parts list (sec II) and locate the figure number (col 10a) and item number or reference designation (col 10b) as noted in the FSN index.

c. When the figure and item number or reference designation are known, scrutinize columns 10a and 10b of the repair parts list (sec II) until the item is located.

d. When the FSN, reference number, figure number, item number and reference designation are not known, scrutinize column 3 of the repair parts list (sec II), which is arranged in alphabetical order.

1-6. Abbreviations

Not applicable.

1-7. Reporting of Equipment Publication Improvements

The reporting of errors, omissions, and recommendations for improving this publication by the individual user is encouraged. Reports should be submitted on DA Form 2028 (Recommended Changes to Publications) and forwarded direct to Commander, US Army-Electronics Command, ATTN: ABEL-MA-CR, Fort Monmouth, NJ., 07703.

(1) SNR CODE	(2) FEDERAL STOCK NUMBER	(3) DESCRIPTION REFERENCE NUMBER & NFR. CODE USABLE ON CODE	(4) UNIT OF MEAS	(5) QTY INC IN UNIT	(6) 30-DAY DS MAINT ALLOWANCE			(7) 30-DAY GS MAINT ALLOWANCE			(8) 1-YR ALW PER 100 EQUIP CNTCTY	(9) DEPOT MAINT ALW PER 100 EQUIP	(10) ILLUSTRATION	
					(a)	(b)	(c)	(a)	(b)	(c)			(a)	(b)
					1-20	21-30	31-100	1-20	21-30	31-100			FIGURE NO.	ITEM NO.
PAFZZ	5905-322-4717	ATTENUATOR, VARIABLE R1A..... RC211-1 (17070)	EA	2	✓	*	*	*	*	*		5	26	R1A
PAFZZ	5905-322-4717	ATTENUATOR, VARIABLE R10..... RC211-1 (17070)	EA	REF	*	*	*	*	*	*		5	26	R10
PAFZZ	5355-395-8965	BUSHING NO-REF-DESIG FOR PTS DIAL..... SCALES 5/8 IN ACROSS FLATS, 5/16 IN LG X 0.2475 IN ID K8854019-1 (49671)	EA	1				*	*	*		3		
PAQZZ	5999-244-5150	CAP. ELECTRICAL NO-REF-DESIG BAKELITE .. 11/16 IN DIA X 5/8 IN LG MFR (71400)	EA	1	*	*	*	*	*	*		3		
PAFZZ	5910-100-8067	CAPACITOR, FIXED, MICA DIELECTRIC C13.... CM300561K (01349)	EA	1	*	*	*	*	*	*		3	24	C13
PAFZZ	5910-101-4007	CAPACITOR, FIXED, MICA DIELECTRIC C8..... CM300122K (01349)	EA	1	*	*	*	*	*	*		3	24	C8
PAFZZ	5910-765-6230	CAPACITOR, FIXED, MICA DIELECTRIC C14.... CM300332K (01349)	EA	1	*	*	*	*	*	*		3	24	C14
PAFZZ	5910-101-3852	CAPACITOR, FIXED, MICA DIELECTRIC C9..... CM35E392K (01349)	EA	1	*	*	*	*	*	*		3	20	C9
PAFZZ	5910-668-0584	CAPACITOR, FIXED, PAPER DIELECTRIC C12... CM22A103M (01349)	EA	1	✓	*	*	*	*	*		3	24	C12
PAFZZ	5910-184-3111	CAPACITOR, FIXED, PAPER DIELECTRIC C1.... CP6101EE104K (01349)	EA	2	*	*	*	*	*	*		3	5	C1
PAFZZ	5910-184-3111	CAPACITOR, FIXED, PAPER DIELECTRIC C7.... CP6101EE104K (01349)	EA	REF	*	*	*	*	*	*		3	5	C7
PAFZZ	5910-112-6794	CAPACITOR, FIXED, PAPER DIELECTRIC C1.... CP5401EF104K (01349)	EA	2	*	*	*	*	*	*		3	5	C1
PAFZZ	5910-112-6794	CAPACITOR, FIXED, PAPER DIELECTRIC C7.... CP5401EF104K (01349)	EA	REF	*	*	*	*	*	*		3	5	C7
PAFZZ	5910-669-4977	CAPACITOR, FIXED, PAPER DIELECTRIC C1.... CP6901EF104M (01349)	EA	2	*	*	*	*	*	*		3	5	C1
PAFZZ	5910-669-4977	CAPACITOR, FIXED, PAPER DIELECTRIC C7.... CP6901EF104M (01349)	EA	REF	*	*	*	*	*	*		3	5	C7
PAFZZ	5910-280-5264	CAPACITOR, FIXED, PAPER DIELECTRIC C3.... CP7001EF254K (01349)	EA	2	*	*	*	*	*	*		3	24	C3
PAFZZ	5910-280-5264	CAPACITOR, FIXED, PAPER DIELECTRIC C6.... CP7001EF254K (01349)	EA	REF	*	*	*	*	*	*		3	24	C6
PAFZZ	5910-248-4881	CAPACITOR, FIXED, PAPER DIELECTRIC C4.... XKMR04-25 (77992)	EA	1	*	*	*	*	*	*		3	5	C4
PAFZZ	5910-583-4128	CAPACITOR, FIXED, PAPER DIELECTRIC C3.... CP5401KE254M (01349)	EA	1	*	*	*	*	*	*		3	24	C3
PAFZZ	5910-161-1644	CAPACITOR, FIXED, PAPER DIELECTRIC C4.... CP6901EF254M (01349)	EA	2	*	*	*	*	*	*		3	5	C4
PAFZZ	5910-161-1644	CAPACITOR, FIXED, PAPER DIELECTRIC C6.... CP6901EF254M (01349)	EA	REF	*	*	*	*	*	*		3	5	C6
PAFZZ	5910-577-1183	CAPACITOR, FIXED, ELECTROLYTIC C2A..... CE520200R (01349)	EA	2	*	*	*	*	*	*		3	5	C2A
PAFZZ	5910-577-1183	CAPACITOR, FIXED, ELECTROLYTIC C2B..... CE520200R (01349)	EA	REF	*	*	*	*	*	*		3	5	C2B
PAFZZ	5910-543-1124	CAPACITOR, FIXED, ELECTROLYTIC C11..... CE51F400R (01349)	EA	1	*	*	*	*	*	*		3	5	C11
PAFZZ	5910-543-1172	CAPACITOR, FIXED, ELECTROLYTIC C9..... CE510000R (01349)	EA	2	*	*	*	*	*	*		3	5	C9

SECTION II

TM11-5830-215-34P

(1) SIR CODE	(2) FEDERAL STOCK NUMBER	(3) DESCRIPTION REFERENCE NUMBER & MFR. CODE USABLE ON CODE	(4) UNIT OF MEAS	(5) QTY INC IN UNIT	(6) 30-DAY GS MAINT ALLOWANCE			(7) 30-DAY GS MAINT ALLOWANCE			(8) 1-YR ALW PER 100 EQUIP CENCY	(9) DEPOT MAINT ALW PER 100 EQUIP	(10) ILLUSTRATION	
					(a)	(b)	(c)	(a)	(b)	(c)			(a)	(b)
					1-20	21-30	31-100	1-20	21-30	31-100			FIGURE NO.	ITEM NO.
PAF22	5910-543-1172	CAPACITOR, FIXED, ELECTROLYTIC C10..... CES1800R (01349)	EA	REF	*	*	*	*	*	*		3	5	C10
PAF22	5935-497-9975	CONNECTOR, PLUG, ELECTRICAL J1..... P2410 (71785)	EA	2	*	*	*	*	*	*		3	5	J1
PAF22	5935-497-9975	CONNECTOR, PLUG, ELECTRICAL J2..... P2410 (71785)	EA	REF	*	*	*	*	*	*		3	5	J2
PAF22	5935-201-7040	CONNECTOR, RECEPTACLE, ELECTRICAL NO-REF- DESIG 10 FEMALE CONT POL STRAIGHT TYPE 3-1/4 IN LG X 1-3/8 IN W X 3/4 IN H S2410S (71785)	EA	2	*	*	*	*	*	*		3		
PAQ22	5820-503-2736	DIAL, SCALE NO-REF-DESIG METER 4 SCALE. DIVISIONS 0 THRU 3 LEFT TO RIGHT 24982-2 (49671)	EA	1	*	*	*	*	*	*		2		
PAQ22	5020-503-2750	DIAL, SCALE NO-REF-DESIG GAIN CONTRL .. 20 SCALE DIVISIONS 0 THRU 20 RIGHT TO LEFT 47044-2 (49671)	EA	1	*	*	*	*	*	*		2		
PAQ22	5960-242-0218	ELECTRON TUBE V4..... 5Y3GT (01349)	EA	1	*	*	*	*	*	*		100	5	V4
PAQ22	5960-188-8538	ELECTRON TUBE V1..... 6J7 (01349)	EA	2	*	*	*	*	*	*		100	5	V1
PAQ22	5960-188-8538	ELECTRON TUBE V2..... 6J7 (01349)	EA	REF	*	*	*	*	*	*		100	5	V2
PAQ22	5960-262-0161	ELECTRON TUBE V3..... 6L4GB (01349)	EA	1	*	*	*	*	*	*		100	5	V3
PAQ22	5960-262-0218	ELECTRON TUBE Y4..... 5Y3GT (01349)	EA	1	*	*	*	*	*	*		100		Y4
PAC22	5920-284-9220	FUSE, CARTRIDGE F1..... F026100 (01349)	EA	1	*	*	*	*	*	*		5	24	F1
PAF22	5920-295-8698	FUSEHOLDER XF1..... XFP (71400)	EA	1	*	*	*	*	*	*		3		XF1
PAF22	5920-285-0755	FUSEHOLDER XF9..... SC076601 (00063)	EA	1	*	*	*	*	*	*		3		XF9
PAQ22	5355-534-5884	KNOB NO-REF-DESIG..... F4790340 (75376)	EA	2	*	*	*	*	*	*		3		
PAQ22	5355-523-0046	KNOB NO-REF-DESIG RD BLACK FOR 0.2075. IN DIA SHAFT ARROW MARKING 1-1/2 IN DIA X 7/8 IN THK P71729-502 (49671)	EA	2	*	*	*	*	*	*		3		
PAF22	5310-221-4880	NUT, PLAIN, HEXAGON NO-REF-DESIG BRASS . BLACK ENAMEL PAINT FINISH 3/8 IN.-32 TPI 1/2 IN. ACROSS FLATS X 1/8 IN H WCP328 (92050)	EA	2	*	*	*	*	*	*		3		
PAF22	5905-279-1738	RESISTOR, FIXED, COMPOSITION R14..... RC32GF220J (01349)	EA	1	*	*	*	*	*	*		3	24	R14
PAF22	5905-279-2645	RESISTOR, FIXED, COMPOSITION R26..... RC32GF331J (01349)	EA	1	*	*	*	*	*	*		3	24	R26
PAF22	5905-253-1231	RESISTOR, FIXED, COMPOSITION R13..... RC42GF291J (01349)	EA	1	*	*	*	*	*	*		3	24	R13
PAF22	5905-299-2051	RESISTOR, FIXED, COMPOSITION R2..... RC31GF471J (01349)	EA	1	*	*	*	*	*	*		3	24	R2
PAF22	5905-299-2049	RESISTOR, FIXED, COMPOSITION R24..... RC32GF561K (01349)	EA	1	*	*	*	*	*	*		3	24	R24

SECTION II

TM11-5830-215-34P

(1) SNR CODE	(2) FEDERAL STOCK NUMBER	(3) DESCRIPTION REFERENCE NUMBER & MFR. CODE USABLE ON CODE		(4) UNIT OF MEAS	(5) QTY INC IN UNIT	(6) 30-DAY GS MAINT ALLOWANCE			(7) 30-DAY GS MAINT ALLOWANCE			(8) 1-YR ALW PER 100 EQUIP CENTS	(9) DEPOT MAINT ALW PER 100 EQUIP	(10) ILLUSTRATION	
						(a)	(b)	(c)	(a)	(b)	(c)			(a)	(b)
						1-20	21-50	51-100	1-20	21-50	51-100			FIGURE NO.	ITEM NO.
PAFZZ	5905-258-0879	RESISTOR, FIXED, WIRE WOUND 1-3-4A (175042)	R17.....	EA	1	*	*	*	*	*	*		3	23	R17
PAFZZ	5905-257-6549	RESISTOR, FIXED, WIRE WOUND RN31G631 (01349)	R17.....	EA	1	*	*	*	*	*	*		3	23	R17
PAFZZ	5905-279-2607	RESISTOR, FIXED, COMPOSITION RC32GF601K (01349)	R7.....	EA	1	*	*	*	*	*	*		3	24	R7
PAFZZ	5905-473-5251	RESISTOR, FIXED, COMPOSITION RC32GF102K (01349)	R9.....	EA	1	*	*	*	*	*	*		3	24	R9
PAFZZ	5905-299-2046	RESISTOR, FIXED, COMPOSITION RC32GF152J (01349)	R8.....	EA	1	*	*	*	*	*	*		3	20	R8
PAFZZ	5905-552-5857	RESISTOR, FIXED, COMPOSITION RC32GF102K (01349)	R15.....	EA	2	*	*	*	*	*	*		3	24	R15
PAFZZ	5905-552-5857	RESISTOR, FIXED, COMPOSITION RC32GF102K (01349)	R16.....	EA	REF	*	*	*	*	*	*		3	24	R16
PAFZZ	5905-299-2038	RESISTOR, FIXED, COMPOSITION RC32GF562K (01349)	R20.....	EA	3	*	*	*	*	*	*		3	24	R20
PAFZZ	5905-299-2938	RESISTOR, FIXED, COMPOSITION RC32GF562K (01349)	R21.....	EA	REF	*	*	*	*	*	*		3	24	R21
PAFZZ	5905-299-2938	RESISTOR, FIXED, COMPOSITION RC32GF562K (01349)	R22.....	EA	REF	*	*	*	*	*	*		3	24	R22
PAFZZ	5905-249-4198	RESISTOR, FIXED, COMPOSITION RC42GF822K (01349)	R18.....	EA	1	*	*	*	*	*	*		3	24	R18
PAFZZ	5905-299-2029	RESISTOR, FIXED, COMPOSITION RC32GF103K (01349)	R23.....	EA	2	*	*	*	*	*	*		3	24	R23
PAFZZ	5905-299-2929	RESISTOR, FIXED, COMPOSITION RC32GF103K (01349)	R25.....	EA	REF	*	*	*	*	*	*		3	24	R25
PAFZZ	5905-102-2996	RESISTOR, FIXED, COMPOSITION RC32GF103K (01349)	R4.....	EA	1	*	*	*	*	*	*		3	24	R4
PAFZZ	5905-254-7096	RESISTOR, FIXED, COMPOSITION R242GF822K (01349)	R19.....	EA	1	*	*	*	*	*	*		3	24	R19
PAFZZ	5905-299-2401	RESISTOR, FIXED, COMPOSITION RC32GF124J (01349)	R5.....	EA	1	*	*	*	*	*	*		3	24	R5
PAFZZ	5905-299-2002	RESISTOR, FIXED, COMPOSITION RC32GF124K (01349)	R5.....	EA	1	*	*	*	*	*	*		3	24	R5
PAFZZ	5905-120-2446	RESISTOR, FIXED, COMPOSITION RC32GF224K (01349)	R11.....	EA	1	*	*	*	*	*	*		3	24	R11
PAFZZ	5905-299-1993	RESISTOR, FIXED, COMPOSITION RC32GF474J (01349)	R3.....	EA	2	*	*	*	*	*	*		3	24	R3
PAFZZ	5905-299-1993	RESISTOR, FIXED, COMPOSITION RC32GF474J (01349)	R12.....	EA	REF	*	*	*	*	*	*		3	24	R12
PAFZZ	5905-299-1985	RESISTOR, FIXED, COMPOSITION RC32GF105K (01349)	R16.....	EA	1	*	*	*	*	*	*		3	24	R16
PAFZZ	5905-660-3978	RESISTOR, VARIABLE, WIRE WOUND R220A1SA101AK (01349)	R6.....	EA	1	*	*	*	*	*	*		3	24	R6
PAQZZ	5960-545-7648	SHIELD, ELECTRON TUBE NO-REF-DESIG. CYLINDRICAL SHAPE 1 IN LG X 0.830 IN DIA K79034-3 (49671)	EA	2	*	*	*	*	*	*		2		
PAFZZ	5935-063-5789	SOCKET, PLUG-IN ELECTRONIC COMPONENTS TS101P01 (01350)	XV1.....	EA	0	*	*	*	*	*	*		3		XV1
PAFZZ	5935-063-5789	SOCKET, PLUG-IN ELECTRONIC COMPONENTS TS101P01 (01350)	XV2.....	EA	REF	*	*	*	*	*	*		3		XV2
PAFZZ	5935-063-5789	SOCKET, PLUG-IN ELECTRONIC COMPONENTS TS101P01 (01350)	XV3.....	EA	REF	*	*	*	*	*	*		3		XV3

(1) SNC CODE	(2) FEDERAL STOCK NUMBER	(3) DESCRIPTION REFERENCE NUMBER & MFR. CODE USABLE ON CODE	(4) UNIT OF MEAS	(5) QTY INC IN UNIT	(6) 30-DAY GS MAINT ALLOWANCE			(7) 30-DAY CS MAINT ALLOWANCE			(8) 1-YR ALW PER 100 EQUIP CENTSY	(9) DEPOT MAINT ALW PER 100 EQUIP	(10) ILLUSTRATION	
					(a)	(b)	(c)	(a)	(b)	(c)			(a)	(b)
					1-20	21-50	51-100	1-20	21-50	51-100			FIGURE NO.	ITEM NO.
PAF22	5985-063-5789	SOCKET, PLUG-IN ELECTRONIC COMPONENTS XV6 TS101P01 (01350)	EA	REF	*	*	*	*	*	*		3		XV6
PAF22	5935-063-5789	SOCKET, PLUG-IN ELECTRONIC COMPONENTS XC2 TS101P01 (01350)	EA	REF	*	*	*	*	*	*		3		XC2
PAF22	5935-063-5789	SOCKET, PLUG-IN ELECTRONIC COMPONENTS XC9 TS101P01 (01350)	EA	REF	*	*	*	*	*	*		3		XC9
PAF22	5935-063-5789	SOCKET, PLUG-IN ELECTRONIC COMPONENTS..... XC10 TS101P01 (01350)	EA	REF	*	*	*	*	*	*		3		XC10
PAF22	5935-063-5789	SOCKET, PLUG-IN ELECTRONIC COMPONENTS..... XC11 TS101P01 (01350)	EA	REF	*	*	*	*	*	*		3		XC11
PAF22	5935-642-03360	SOCKET, PLUG-IN ELECTRONIC COMPONENTS X5. 77N1P8 (02660)	EA	4	*	*	*	*	*	*		3		X5
PAF22	5935-642-0334	SOCKET, PLUG-IN ELECTRONIC COMPONENTS X6. 77N1P8 (02660)	EA	REF	*	*	*	*	*	*		3		X6
PAF22	5935-642-0334	SOCKET, PLUG-IN ELECTRONIC COMPONENTS X7. 77N1P8 (02660)	EA	REF	*	*	*	*	*	*		3		X7
PAF22	5935-642-0334	SOCKET, PLUG-IN ELECTRONIC COMPONENTS X8. 77N1P8 (02660)	EA	REF	*	*	*	*	*	*		3		X8
PAF22	5930-330-9872	SWITCH, ROTARY S2..... 3214J (90201)	EA	1	*	*	*	*	*	*		5	24	S2
PAF22	5930-642-9756	SWITCH, TOGGLE S1..... 0900K324 (15605)	EA	1	*	*	*	*	*	*		5	24	S1
PAF22	5930-050-2627	SWITCH, TOGGLE S1..... N125098-1 (94906)	EA	1	*	*	*	*	*	*		5	24	S1
PAF22	5940-284-8243	TERMINAL BOARD NO-REF-DESIG 2 SOLDER LUG TEAM 1-7/16 IN LG X 7/16 IN W X 3/32 IN H A8090640-1 (49671)	EA	1	*	*	*	*	*	*		3		
PAF22	5950-646-3186	TRANSFORMER, AUDIO FREQUENCY T1..... 0949025-1 (49671)	EA	1	*	*	*	*	*	*		3	5	T1
PAF22	5950-646-3050	TRANSFORMER, AUDIO FREQUENCY T2..... W901317 (49671)	EA	1	*	*	*	*	*	*		3	5	T2
PAF22	5950-645-5779	TRANSFORMER, POWER, STEP-DOWN AND STEP-UP P T3 XT3102A (49671)	EA	1	*	*	*	*	*	*		3	5	T3
PAF22	5340-285-1516	WASHER, FLAT NO-REF-DESIG RD STEEL CAD. PLATED W/CHROMATIC 0.303 IN. DIA, 0.625 IN. OD X 0.015 IN THK K73109-5 (49671)	EA	2	*	*	*	*	*	*		5		

INDEX- FEDERAL STOCK NUMBER AND REFERENCE NUMBER
CROSS-REFERENCE TO FIGURE AND ITEM NUMBER

STOCK NUMBER	FIGURE NO.	ITEM NO.	STOCK NUMBER	FIGURE NO.	ITEM NO.
5310-221-4880			5910-248-4301		
5340-285-4546			5910-200-5264	5	C6
5355-395-8965			5910-200-5244	24	C3
535-524-0046			5910-543-1124	5	C6
5355-524-5884			5910-563-1172	5	C11
5820-503-2236			5910-543-1172	5	C10
5820-503-2750			5910-577-1183	5	C9
5905-102-2998	24	R6	5910-577-1183	5	C20
5905-120-2446	24	R11	5910-483-4128	24	C3
5905-249-4498	24	R10	5910-668-0586	24	C12
5905-253-1231	24	R13	5910-669-4977	5	C1
5905-256-7696	24	R19	5910-669-4977	5	C7
5905-257-6549	23	R17	5910-765-6239	24	C14
5905-258-0079	23	R17	5920-284-9220	24	F1
5905-279-1738	24	R14	5920-229-0755		F9
5905-279-2607	24	R7	5920-295-8696		F11
5906-279-2645	24	R20	5930-060-2627	24	S1
5905-290-1985	24	R10	5930-330-9872	24	S2
5905-299-1993	24	R12	5930-642-9756	24	S1
5905-299-1993	24	R3			R110
5906-299-2001	24	R5	5935-063-5789		R111
5905-299-2002	24	R5	5935-063-5789		R12
5905-299-2029	24	R23	5935-063-5789		R19
5905-299-2029	24	R25	5936-063-5789		R11
595-299-2638	24	R20	5935-063-5789		R12
5905-299-2038	24	R21	5935-063-5789		R13
5905-299-2038	24	R22	5936-063-5789		R14
5905-299-2046	20	R1	5935-201-7040		R15
5905-299-2049	24	R24	5935-497-9975		R16
5905-299-2051	24	R2	5935-497-9975	5	J1
5905-322-4717	24	R1A	5936-642-0334		J2
5905-322-4717	24	R10	5935-642-0334		R17
5905-473-5254	24	R9	5935-642-0334		R18
5905-552-5857	24	R15	5935-642-8334		R19
5905-552-5057	24	R16	5940-204-8243		R20
5905-660-3978	24	R6	5950-645-5779	5	T1
5910-100-8067	24	C13	5950-646-2850	5	T2
5910-101-3852	20	C5	5950-646-5106	5	T1
5910-101-4007	24	C8	5960-188-8538	5	W1
5910-112-6754	5	C1	5960-188-8638	5	W2
5910-112-6794	5	C7	5960-262-0161	5	W3
5910-161-1644	5	C4	5960-262-0218	5	W4
5910-161-1644	5	C6	5960-262-0218	5	W4
5910-184-3111	5	C1	5960-545-7449		
5910-184-3111	5	C7	5999-244-5150		

REFERENCE NO.	MFR CODE	FIG. NO.	ITEM NO.	REFERENCE NO.	MFR CODE	FIG. NO.	ITEM NO.
A30500-3-1	49671		F1	H400	71400		
B94023-1	49671	5	F1	K73139-5	49671		
C15100J4	01349	5	C9	K79034-3	49671		
C15100J4	01349	5	C10	K80440-1	49671		
C151F4J4	01349	5	C11	M525090-1	49671	26	S1
C15202J4	01349	5	C24	N901317	49671	5	T2
C15202J4	01349	5	C20	P2410	71705	5	J1
C1530122K	01349	24	C0	P2410	71705	5	J2
C1530132K	01349	24	C14	P717296-502	49671		
C1530130K	01349	24	C13	RA20A15A101AK	01349	24	R6
C1535E392K	01349	20	C5	RC211-1	17070	24	R1A
C1522A1610J4	01349	24	C12	RC211-1	17070	24	R1B
C15401EF1J4	01349	5	C1	HL32CF102K	01349	24	R9
C15401EF1J4	01349	5	C7	RC32CF103K	01349	24	R23
C15401K1E254K	01349	24	C3	RC32CF103K	01349	24	R25
C16101EF1J4	01349	5	C1	RC32CF105K	01349	24	R10
C16101EF1J4	01349	5	C7	RC32CF124J	01349	24	R5
C16101EF1J4	01349	5	C1	RC32CF124K	01349	24	R5
C16101EF1J4	01349	5	C7	RC32CF152J	01349	20	R8
C16101EF254K	01349	5	C4	RC32CF162K	01349	24	R15
C16101EF254K	01349	5	C6	RC32CF162K	01349	24	R16
C17101EF254K	01349	24	C3	RC32CF163K	01349	24	R14
C17101EF254K	01349	24	C6	RC32CF220J	01349	24	R14
F02G1A1J0B	01349	24	F1	RC32CF224K	01349	24	R11
F4790300B	75376			RC32CF331J	01349	24	R26
H400	71400		MFR	RC32CF471J	01349	24	R2

SECTION IV

TM11-5830-215-34P

REFERENCE NO.	MFR CODE	FIG. NO.	ITEM NO.	REFERENCE NO.	MFR CODE	FIG. NO.	ITEM NO.
NC326F674J	01349	24	R3	TS101P01	01350		XC10
NC326F674J	01349	24	R12	TS101P01	01350		XC11
NC326F561K	01349	24	R24	WGP320N	92050		
NC326F562K	01349	24	R20	XKRR04-25	77992	5	C4
NC326F562K	01349	24	R21	ST3102A	49671	5	T3
NC326F562K	01349	24	R22	1-3-4A	75062	23	R17
NC326F601K	01349	24	R7	24902-2	49671		
NC426F391J	01349	24	R13	3214J	90201	24	S2
NC426F822K	01349	24	R10	47046-2	49671		
NC426F823K	01349	24	R19	5V3GT	01349		Y4
NC310031	01349	23	R17	5V3MGTA	01349	5	V4
SC076041	00043		X0	6J7	01349	5	V1
S241050	71705		X0	6J7	01349	5	V2
TS101P01	01350		XC2	016UG0	01349	5	V3
TS101P01	01350		XC9	77M1P0	02660		X5
TS101P01	01350		XV1	77M1P0	02660		X6
TS101P01	01350		XV2	77M1P0	02660		X7
TS101P01	01350		XV3	77M1P0	02660		X8
TS101P01	01350		XV6	0900K324	15605	2 4	S1

By Order of the Secretary of the Army:

CREIGHTON W. ABRAMS
General, United States Army
Chief of Staff

Official:

VERNE L. BOWERS
Major General, United States Army
The Adjutant General

Distribution:

Active Army:

CNGB (1)
TSG (1)
ACSC-E (2)
USAMB (10)
USAARENBD (1)
USASA (2)
TRADOC (2)
AMC (1)
MICOM (1)
TECOM (2)
ARADCOM (2)
ARADCOM Rgn (1)
OS Maj Comd (2)
USACDCEC (10)
USACC (2)
HISA (Ft Monmouth) (18)
Armies (1)
USASESS (5)
Svc Colleges (1)
Ft Huachuca (5)
WSMR (1)

Ft Carson (5)
USAERDAA (1)
USAERDAW (1)
Army Dep (1) except
LBAD (10)
SAAD (50)
TOAD (14)
ATAD (10)
GENDEP (1)
Sig Sec GENDEP (2)
Sig Dep (2)
SigFLDMS (1)
Ft Richardson (ECOM Ofc) (1)
Units org under fol TOE:
(1 cy each)
11-16
11-98
11-117
11-302
11-500(AA-AC)
29-134
29-136

NG & USAR: None

For explanation of abbreviations used, see AR 310-50.

★ U.S. GOVERNMENT PRINTING OFFICE: 1974-708117/1459

END

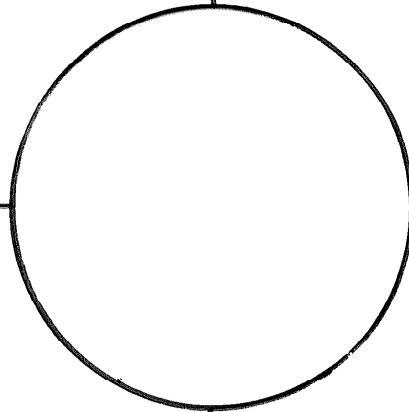
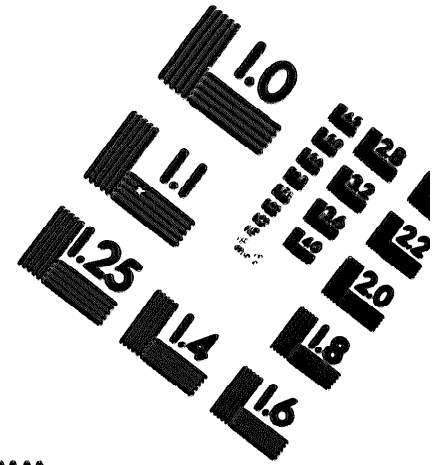
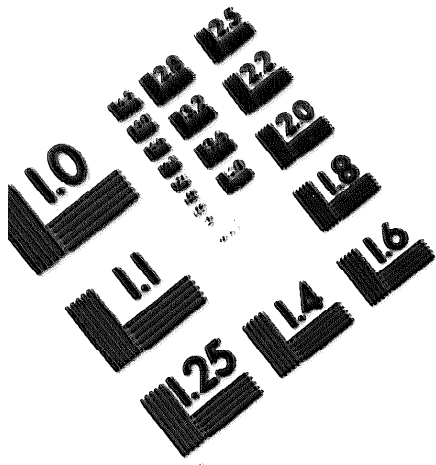
11-26-82

DATE





MICROFORM TEST TARGET



150 MM

1.0 mm (ø= 0.1 mm)

ABCDEFGHIJKLMN OPQRSTUVWXYZ 1234567890
abcdefghijklmnopqrstuvwxyz \$%# 1/2 1/4 1/8 — = + x & @ *

1.5 mm (ø= 1.09 mm)

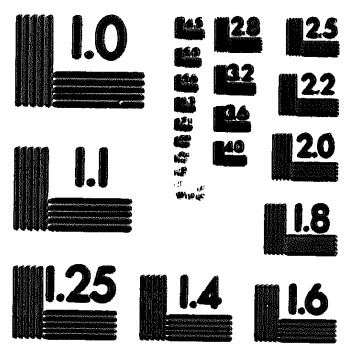
ABCDEFGHIJKLMN OPQRSTUVWXYZ 1234567890
abcdefghijklmnopqrstuvwxyz \$%# 1/2 1/4 1/8 — = + x & @ *

2.0 mm (ø= 1.37 mm)

ABCDEFGHIJKLMN OPQRSTUVWXYZ
abcdefghijklmnopqrstuvwxyz
1234567890 \$%# 1/2 1/4 1/8 — = + x & @ *

2.5 mm (ø= 1.77 mm)

ABCDEFGHIJKLMN OPQRSTUVWXYZ
abcdefghijklmnopqrstuvwxyz
1234567890 \$%# 1/2 1/4 1/8 — = + x & @ *



1.0 mm (ø= 0.1 mm)

ABCDEFGHIJKLMN OPQRSTUVWXYZ 1234567890
abcdefghijklmnopqrstuvwxyz \$%# 1/2 1/4 1/8 — = + x & @ *

1.5 mm (ø= 1.09 mm)

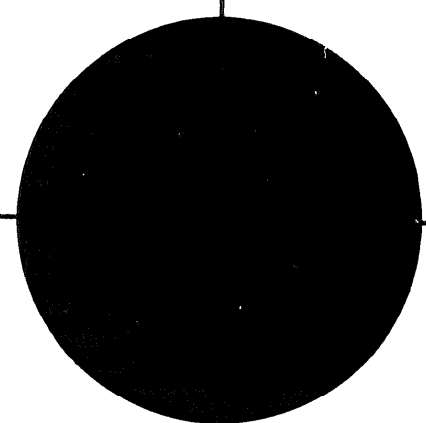
ABCDEFGHIJKLMN OPQRSTUVWXYZ 1234567890
abcdefghijklmnopqrstuvwxyz \$%# 1/2 1/4 1/8 — = + x & @ *

2.0 mm (ø= 1.37 mm)

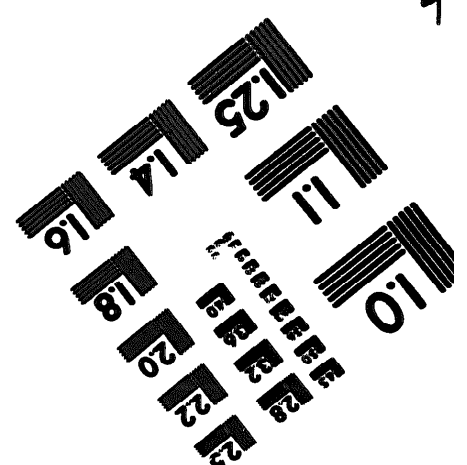
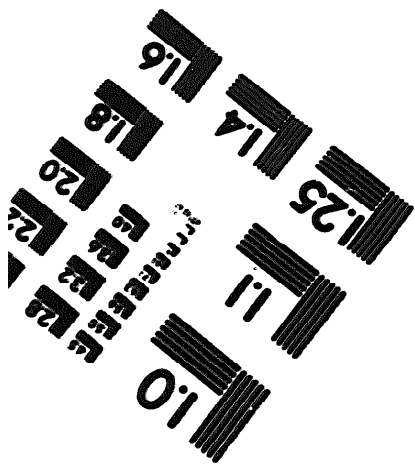
ABCDEFGHIJKLMN OPQRSTUVWXYZ
abcdefghijklmnopqrstuvwxyz
1234567890 \$%# 1/2 1/4 1/8 — = + x & @ *

2.5 mm (ø= 1.77 mm)

ABCDEFGHIJKLMN OPQRSTUVWXYZ
abcdefghijklmnopqrstuvwxyz
1234567890 \$%# 1/2 1/4 1/8 — = + x & @ *



200 MM



250 MM